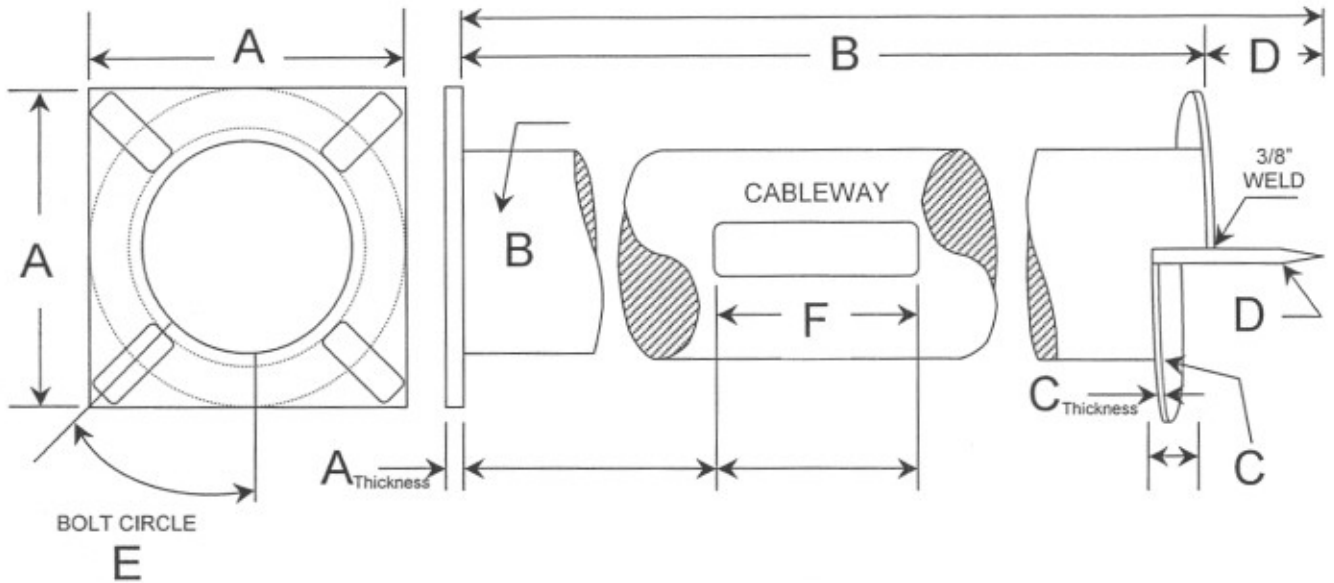


HELIX FOUNDATION

JOB: GREAT LAKES NAVAL TRAINING CENTER



SLSF-8-5

124 Pieces

A BASEPLATE: 9" Diameter x 3/4" Thick

B BODY: 8-5/8" OD Sch 20 .250 Wall 5 Ft Long

C HELIX PLATE: 3/8" x 14" OD with 3" Pitch

D PILOT POINT: 9" Long x 1-1/4" OD

**E BOLT CIRCLE DESIGN: Bolt Circle 6-1/2 - 8" Variable
Slot Width 7/8"**

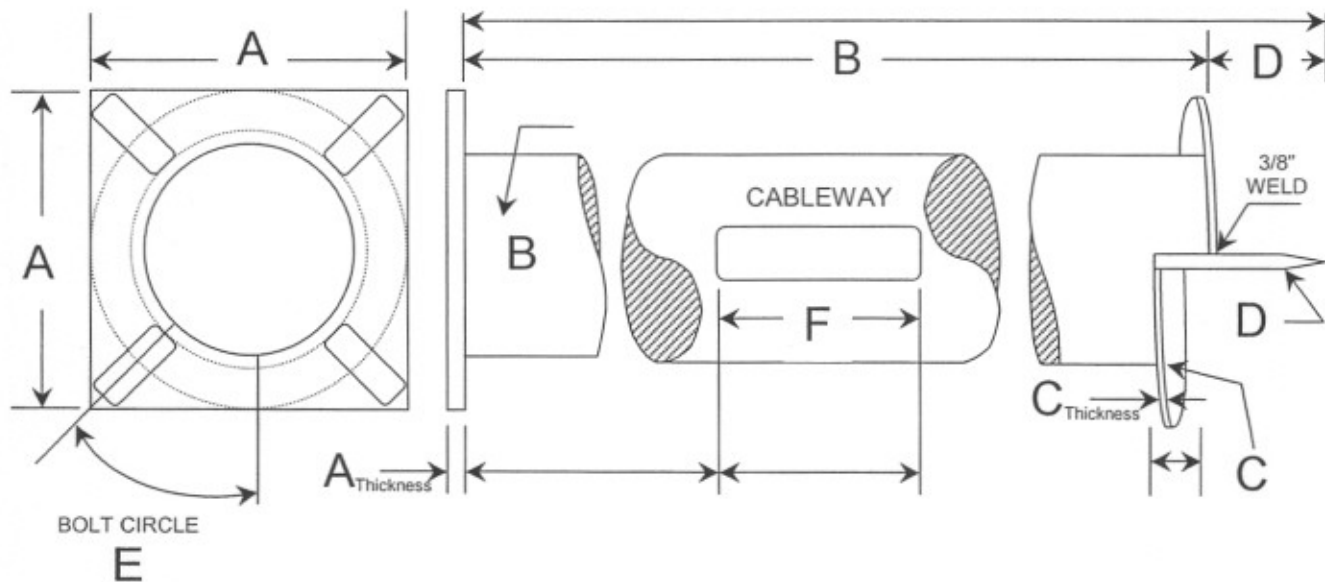
F CABLEWAY: 2-1/2" x 18" Starting 12" from top plate -- Double Sided

**CONNECTING HARDWARE: 1 set of 4 each 3/4" x 4" Carriage Bolts
with LW/FW/HN**

HELIX IS HOT DIP GALVANIZED PER ASTM A-123

HELIX FOUNDATION

JOB: GREAT LAKES NAVAL TRAINING CENTER



SLSF-6-5

137 Pieces

A BASEPLATE: 9" Diameter x 3/4" Thick

B BODY: 6-5/8" OD Sch 20 .250 Wall 5 Ft Long

C HELIX PLATE: 3/8" x 14" OD with 3" Pitch

D PILOT POINT: 9" Long x 1-1/4" OD

**E BOLT CIRCLE DESIGN: Bolt Circle 6-1/2 - 8" Variable
Slot Width 7/8"**

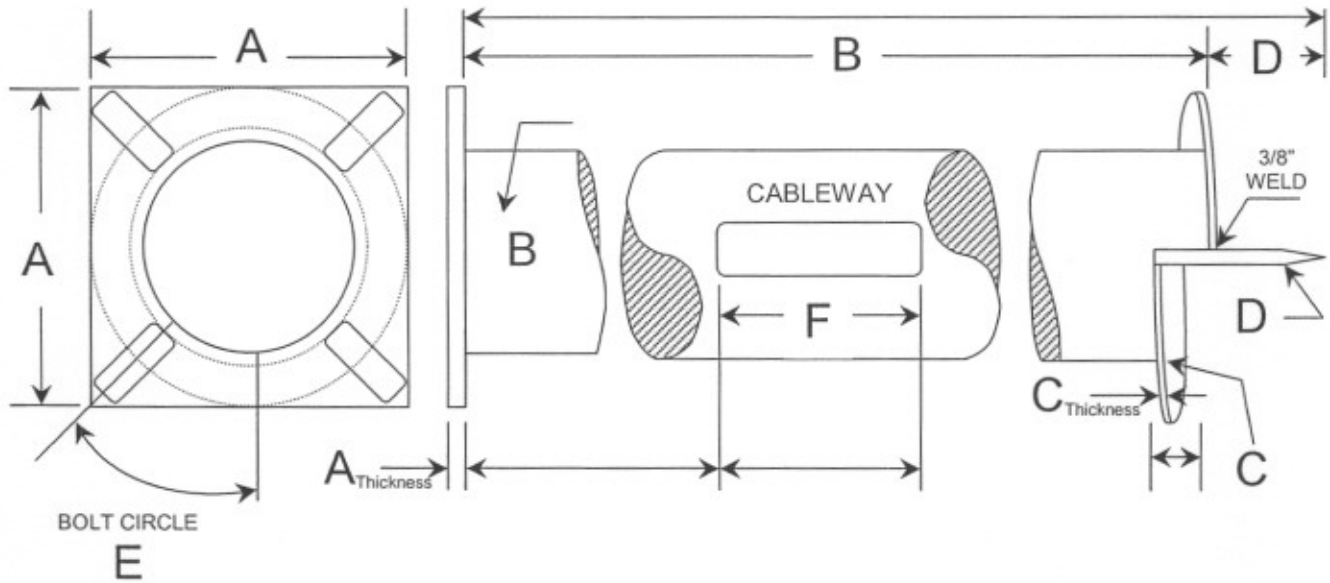
F CABLEWAY: 2-1/2" x 18" Starting 12" from top plate -- Double Sided

**CONNECTING HARDWARE: 1 set of 4 each 3/4" x 4" Carriage Bolts
with LW/FW/HN**

HELIX IS HOT DIP GALVANIZED PER ASTM A-123

HELIX FOUNDATION

JOB: FORT CARSON AFB



SLSF-6-5

142 Pieces

A BASEPLATE: 12" x 12" x 1" Thick

B BODY: 6-5/8" OD Sch 20 .250 Wall 5 Ft Long

C HELIX PLATE: 3/8" x 14" OD with 3" Pitch

D PILOT POINT: 1-1/4" OD x 9" Long

**E BOLT CIRCLE DESIGN: Bolt Circle Center Hole – 14" Variable
Slot Width 1-1/8"**

F CABLEWAY: 2-1/2" x 12" Starting 12" from top plate -- Double Sided

**CONNECTING HARDWARE: 1 set of 4 each 1" x 4" Hex Bolts
with LW/FW/HN**

HELIX IS HOT DIP GALVANIZED PER ASTM A-123